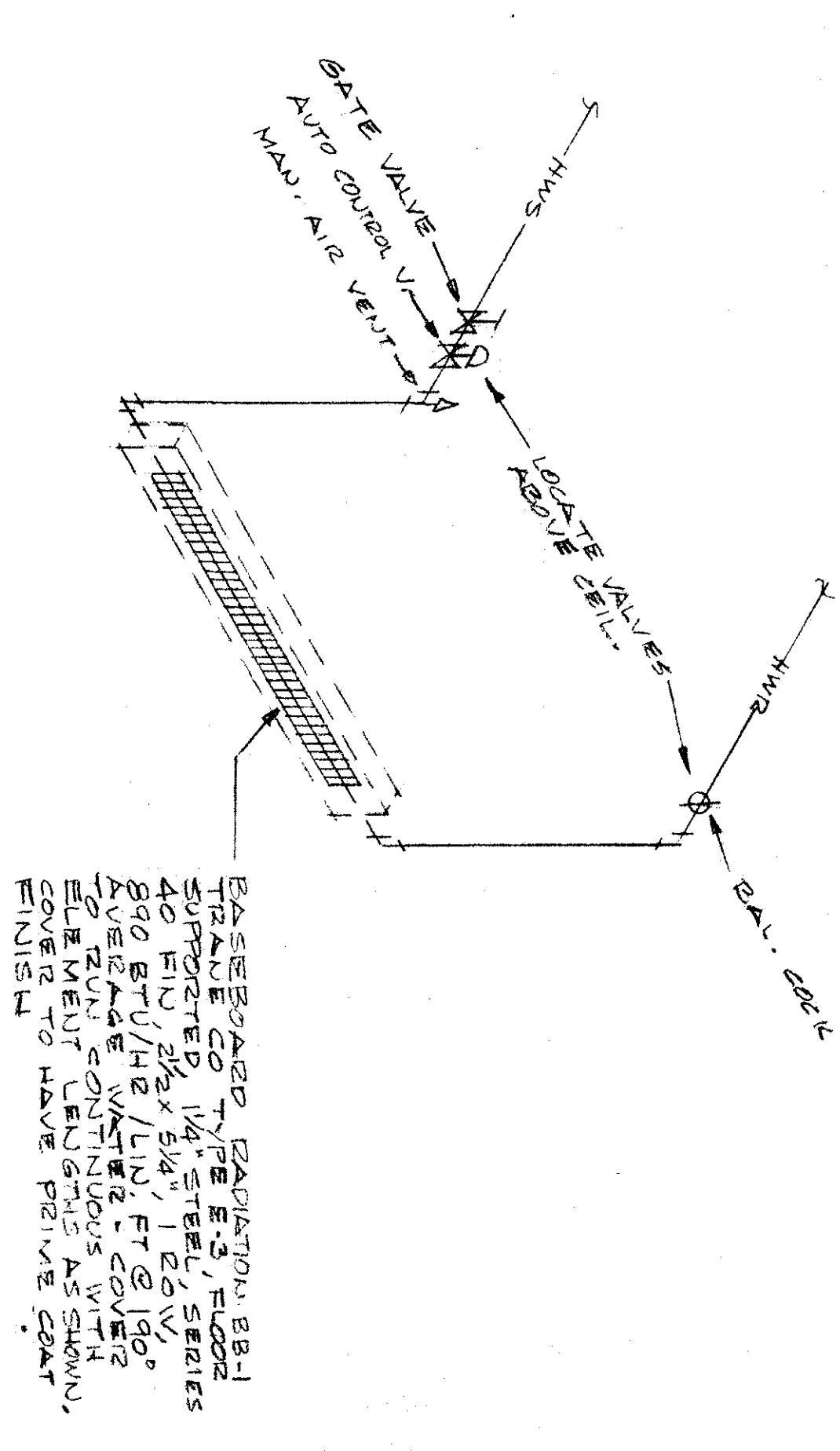
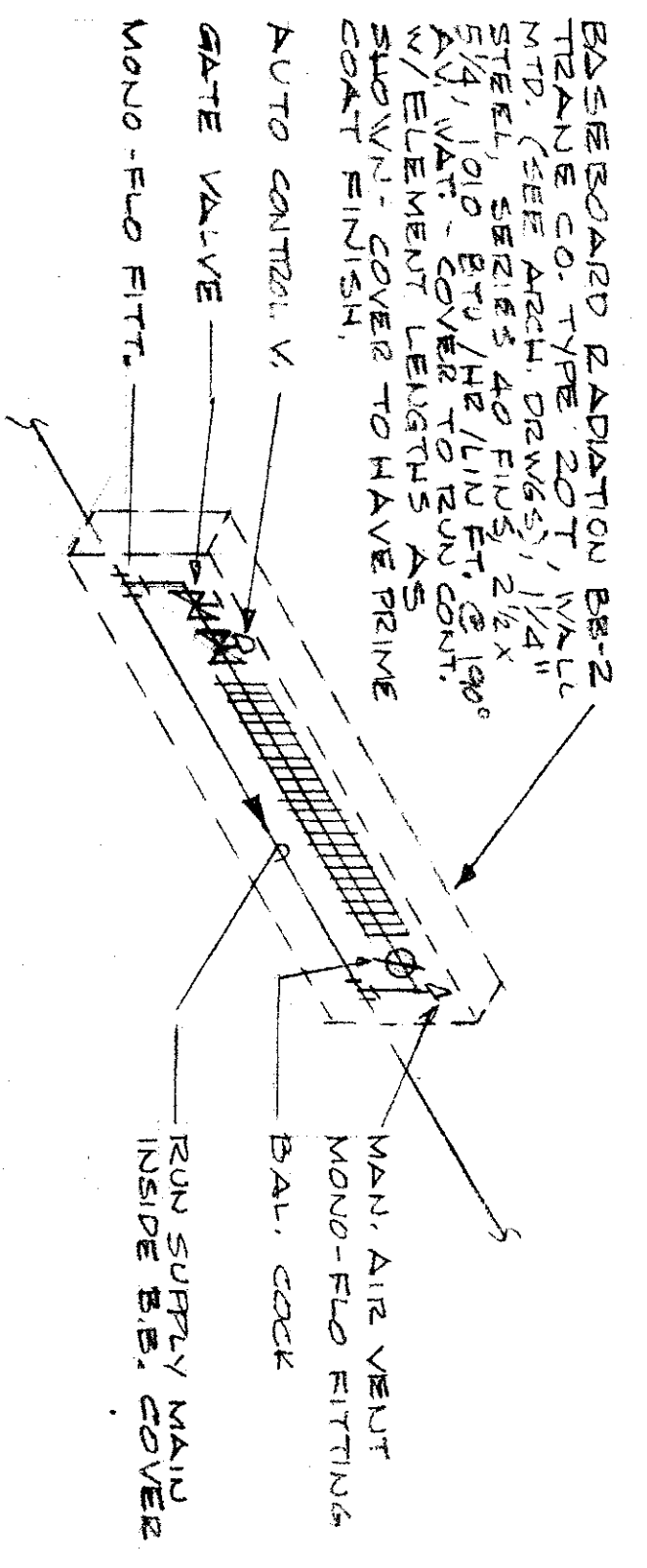


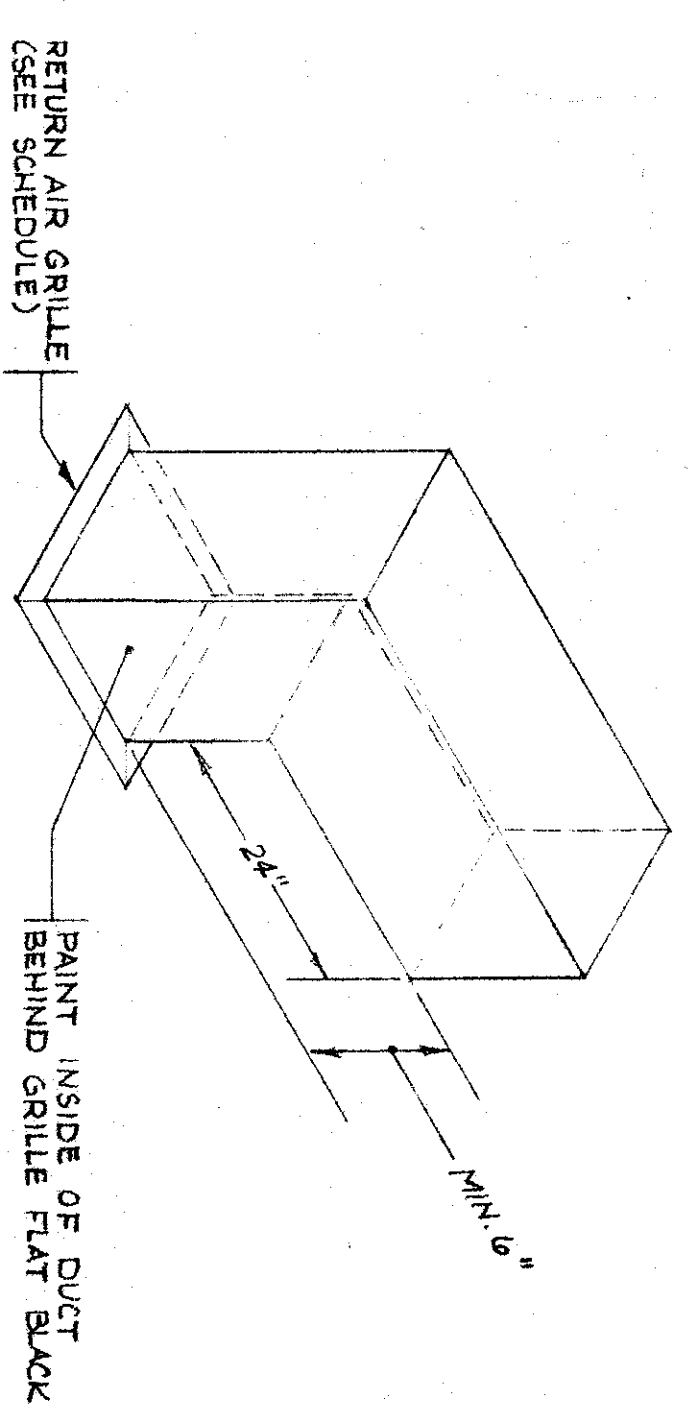
OFFICE FLOOR PLAN - HVAC
SCALE 1/8" = 1'-0"



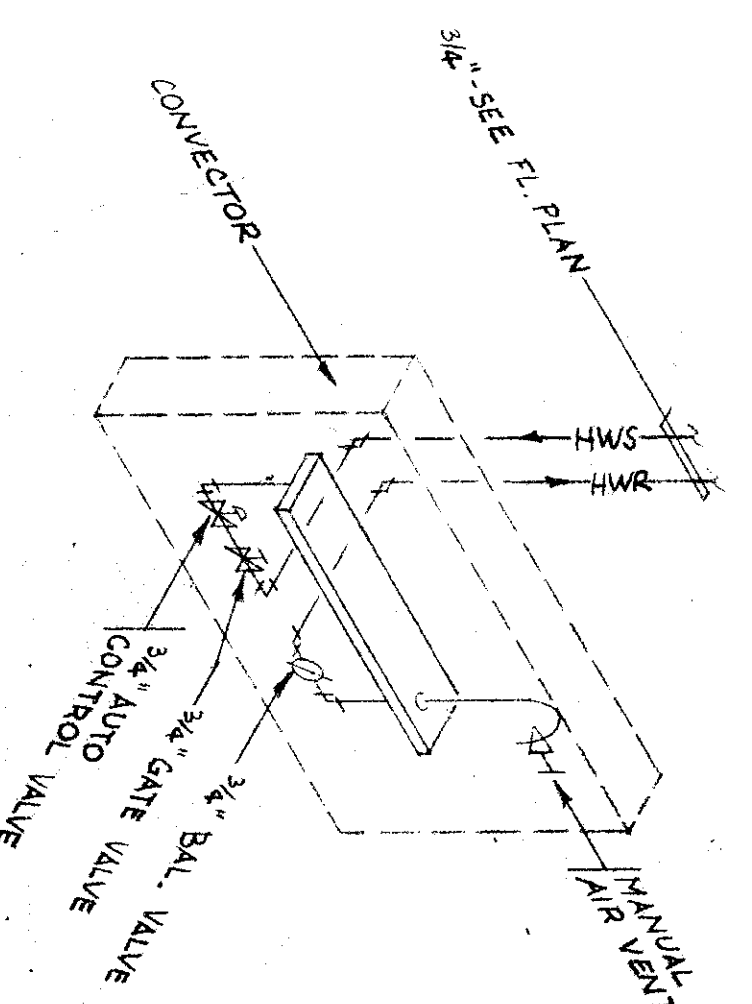
BB-1



BB-2



TYPICAL RAG BOOT DETAIL



CONNECTOR PIPING SCHEMATIC

CONNECTOR SCHEDULE			
UNIT NO.	TYPE	REMARKS	QUANTITY
1	3/4\"/>		

TERMINAL CONTROL BOX SCHEDULE			
UNIT NO.	TYPE	REMARKS	QUANTITY
1	16x12	16x12 EXH. OUT OF DUCT TO E10	1
2	16x12	16x12 EXH. OUT OF DUCT TO E10	1
3	16x12	16x12 EXH. OUT OF DUCT TO E10	1
4	16x12	16x12 EXH. OUT OF DUCT TO E10	1
5	16x12	16x12 EXH. OUT OF DUCT TO E10	1
6	16x12	16x12 EXH. OUT OF DUCT TO E10	1
7	16x12	16x12 EXH. OUT OF DUCT TO E10	1
8	16x12	16x12 EXH. OUT OF DUCT TO E10	1
9	16x12	16x12 EXH. OUT OF DUCT TO E10	1
10	16x12	16x12 EXH. OUT OF DUCT TO E10	1
11	16x12	16x12 EXH. OUT OF DUCT TO E10	1
12	16x12	16x12 EXH. OUT OF DUCT TO E10	1
13	16x12	16x12 EXH. OUT OF DUCT TO E10	1
14	16x12	16x12 EXH. OUT OF DUCT TO E10	1
15	16x12	16x12 EXH. OUT OF DUCT TO E10	1
16	16x12	16x12 EXH. OUT OF DUCT TO E10	1
17	16x12	16x12 EXH. OUT OF DUCT TO E10	1
18	16x12	16x12 EXH. OUT OF DUCT TO E10	1
19	16x12	16x12 EXH. OUT OF DUCT TO E10	1
20	16x12	16x12 EXH. OUT OF DUCT TO E10	1
21	16x12	16x12 EXH. OUT OF DUCT TO E10	1
22	16x12	16x12 EXH. OUT OF DUCT TO E10	1
23	16x12	16x12 EXH. OUT OF DUCT TO E10	1
24	16x12	16x12 EXH. OUT OF DUCT TO E10	1
25	16x12	16x12 EXH. OUT OF DUCT TO E10	1
26	16x12	16x12 EXH. OUT OF DUCT TO E10	1
27	16x12	16x12 EXH. OUT OF DUCT TO E10	1
28	16x12	16x12 EXH. OUT OF DUCT TO E10	1
29	16x12	16x12 EXH. OUT OF DUCT TO E10	1
30	16x12	16x12 EXH. OUT OF DUCT TO E10	1
31	16x12	16x12 EXH. OUT OF DUCT TO E10	1
32	16x12	16x12 EXH. OUT OF DUCT TO E10	1
33	16x12	16x12 EXH. OUT OF DUCT TO E10	1
34	16x12	16x12 EXH. OUT OF DUCT TO E10	1
35	16x12	16x12 EXH. OUT OF DUCT TO E10	1
36	16x12	16x12 EXH. OUT OF DUCT TO E10	1
37	16x12	16x12 EXH. OUT OF DUCT TO E10	1
38	16x12	16x12 EXH. OUT OF DUCT TO E10	1
39	16x12	16x12 EXH. OUT OF DUCT TO E10	1
40	16x12	16x12 EXH. OUT OF DUCT TO E10	1
41	16x12	16x12 EXH. OUT OF DUCT TO E10	1
42	16x12	16x12 EXH. OUT OF DUCT TO E10	1
43	16x12	16x12 EXH. OUT OF DUCT TO E10	1
44	16x12	16x12 EXH. OUT OF DUCT TO E10	1
45	16x12	16x12 EXH. OUT OF DUCT TO E10	1
46	16x12	16x12 EXH. OUT OF DUCT TO E10	1
47	16x12	16x12 EXH. OUT OF DUCT TO E10	1
48	16x12	16x12 EXH. OUT OF DUCT TO E10	1
49	16x12	16x12 EXH. OUT OF DUCT TO E10	1
50	16x12	16x12 EXH. OUT OF DUCT TO E10	1
51	16x12	16x12 EXH. OUT OF DUCT TO E10	1
52	16x12	16x12 EXH. OUT OF DUCT TO E10	1
53	16x12	16x12 EXH. OUT OF DUCT TO E10	1
54	16x12	16x12 EXH. OUT OF DUCT TO E10	1
55	16x12	16x12 EXH. OUT OF DUCT TO E10	1
56	16x12	16x12 EXH. OUT OF DUCT TO E10	1
57	16x12	16x12 EXH. OUT OF DUCT TO E10	1
58	16x12	16x12 EXH. OUT OF DUCT TO E10	1
59	16x12	16x12 EXH. OUT OF DUCT TO E10	1
60	16x12	16x12 EXH. OUT OF DUCT TO E10	1
61	16x12	16x12 EXH. OUT OF DUCT TO E10	1
62	16x12	16x12 EXH. OUT OF DUCT TO E10	1
63	16x12	16x12 EXH. OUT OF DUCT TO E10	1
64	16x12	16x12 EXH. OUT OF DUCT TO E10	1
65	16x12	16x12 EXH. OUT OF DUCT TO E10	1
66	16x12	16x12 EXH. OUT OF DUCT TO E10	1
67	16x12	16x12 EXH. OUT OF DUCT TO E10	1
68	16x12	16x12 EXH. OUT OF DUCT TO E10	1
69	16x12	16x12 EXH. OUT OF DUCT TO E10	1
70	16x12	16x12 EXH. OUT OF DUCT TO E10	1
71	16x12	16x12 EXH. OUT OF DUCT TO E10	1
72	16x12	16x12 EXH. OUT OF DUCT TO E10	1
73	16x12	16x12 EXH. OUT OF DUCT TO E10	1
74	16x12	16x12 EXH. OUT OF DUCT TO E10	1
75	16x12	16x12 EXH. OUT OF DUCT TO E10	1
76	16x12	16x12 EXH. OUT OF DUCT TO E10	1
77	16x12	16x12 EXH. OUT OF DUCT TO E10	1
78	16x12	16x12 EXH. OUT OF DUCT TO E10	1
79	16x12	16x12 EXH. OUT OF DUCT TO E10	1
80	16x12	16x12 EXH. OUT OF DUCT TO E10	1
81	16x12	16x12 EXH. OUT OF DUCT TO E10	1
82	16x12	16x12 EXH. OUT OF DUCT TO E10	1
83	16x12	16x12 EXH. OUT OF DUCT TO E10	1
84	16x12	16x12 EXH. OUT OF DUCT TO E10	1
85	16x12	16x12 EXH. OUT OF DUCT TO E10	1
86	16x12	16x12 EXH. OUT OF DUCT TO E10	1
87	16x12	16x12 EXH. OUT OF DUCT TO E10	1
88	16x12	16x12 EXH. OUT OF DUCT TO E10	1
89	16x12	16x12 EXH. OUT OF DUCT TO E10	1
90	16x12	16x12 EXH. OUT OF DUCT TO E10	1
91	16x12	16x12 EXH. OUT OF DUCT TO E10	1
92	16x12	16x12 EXH. OUT OF DUCT TO E10	1
93	16x12	16x12 EXH. OUT OF DUCT TO E10	1
94	16x12	16x12 EXH. OUT OF DUCT TO E10	1
95	16x12	16x12 EXH. OUT OF DUCT TO E10	1
96	16x12	16x12 EXH. OUT OF DUCT TO E10	1
97	16x12	16x12 EXH. OUT OF DUCT TO E10	1
98	16x12	16x12 EXH. OUT OF DUCT TO E10	1
99	16x12	16x12 EXH. OUT OF DUCT TO E10	1
100	16x12	16x12 EXH. OUT OF DUCT TO E10	1

- NOTES:
- SEE AIR FLOW QUANTITIES ON FLOOR PLAN FOR HIGHEST CAPACITY OF CONTROL BOXES.
 - DIFFERENTIAL TERMINALS TO BE 4\"/>