

## Cycling To UCCS

This map was produced as a guide for commuting cyclists.

Experienced local cyclists provided valuable input to draw a comprehensive picture of existing routes to UCCS. Ongoing construction may affect routes.

Buses and Bikes = Multi-modal Transportation

Take your bike anywhere Mountain Metro Transit (MMT) goes!

Bicycles are not permitted inside a transit bus. However, all buses are fitted with bike racks at the front of the bus. The racks hold either two or three bikes firmly in place. Bikes are loaded and unloaded by passengers from the curb. If the rack is full, cyclists may wait for the next available bus.

Cyclists pay the regular passenger fare and there are no additional costs for the bicycle.

There are 5 MMT Bus routes that service the campus:

# 9 – every 35 minutes

# 14 – East Library

# 19 – (nights and Sundays)

# 20 – Circle-UCCS

E2 Falcon-Garden of the Gods

For more information go to: [www.mmtransit.com](http://www.mmtransit.com)

Or (719) 385-RIDE (7433)

Check out the transit system map at: <http://www.springsgov.com/units/transit/systemMap.pdf>

## UCCS Bicycling Information

Campus Police (UCCS Dept. of Public Safety) 262-3111

All bicycles used on the UCCS campus must be registered. Bicycle Registration is free and is accomplished at the UCCS Dept. of Public Safety.

Campus Closure (Snow) Line: 262-3346

The following are organizations that can help with safety, commuting, and bicycle infrastructure issues:

Campus Alternative transportation <http://www.uccs.edu/alternative/>

Colorado University at Boulder Bicycle Program <http://www.colorado.edu/bicycleprogram/>

Colorado Springs Transportation Education <http://www.springsgov.com/units/transedu/Transit.htm>

Colorado Springs Bicycle, Pedestrian, and Neighborhood Traffic Programs Manager - Kristin Bennett, [KBen-nett@springsgov.com](mailto:KBen-nett@springsgov.com)

Pikes Peak Area Bikeways Coalition – Local bicycle advocacy <http://www.trailsandopenspaces.org/Bikes/index.htm> or [bikerbrody@aol.com](mailto:bikerbrody@aol.com)

Bicycle Colorado – State bicycle advocacy [www.bicyclecolo.org](http://www.bicyclecolo.org)

League of American Bicyclists – national bicycle advocacy [www.bikeleague.org](http://www.bikeleague.org)

Colorado Springs Cycling Club [www.bikesprings.org](http://www.bikesprings.org)

## UCCS Commuter Cycling Map



UNIVERSITY OF COLORADO  
AT COLORADO SPRINGS

Phone: 555-555-5555

Fax: 555-555-5555

E-mail: [someone@example.com](mailto:someone@example.com)

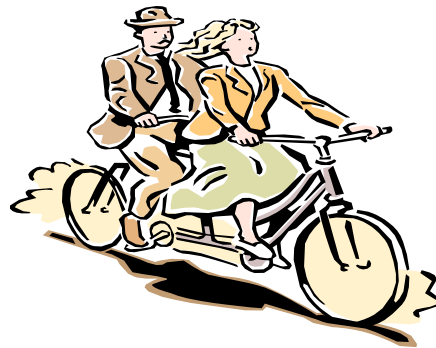
## Cycling Routes To UCCS (continued)

### 6) Approaching from the North (and a higher elevation):

Access to UCCS from the north is a challenge due in part to COSMIX construction and the Austin Bluffs/ Union interchange project.

If getting to class without being sweaty from ascending a large hill is a concern, consider driving into University Park with a mountain or hybrid bike on/ in your vehicle.

Go to the top of Rockhurst Blvd. If you can't find Rockhurst Blvd., don't attempt this ride. There you will find the University Park Trailhead. You can park in the lot or anywhere along the city streets. On your bike, head towards the cell phone towers where on your right you will see a gate blocking a dirt road with a sign saying authorized vehicles only. This is Observatory Rd. (aka. Alpine Village Dr. aka. Stanton Rd.) and bikes are authorized vehicles. The gate has a social bike path around the left side. Go around the gate and ride the road downhill. The surface of the road is severely damaged by drainage in some places. Control your speed, be cautious of new drainage damage and continue to the lower gate. There you will have to go to the left and up and around the gate or dismount and walk your bike through the gate. There is a social trail there as well. Once beyond the gate, you are at the UCCS dorms and can take the Sherpa Trail to the main Campus. Enjoy the small steps as you descend. You will show up to class with a smile on your face from the adventure you just experienced. The ride back to your car will be a workout and stress relief after classes



## Cycling Routes To UCCS (continued)

### Approaching from the West:

#### 3) Another option is to take:

- Templeton Gap Trail to Nevada Ave
- Turn left and head north to Mount View Lane
- Turn right on Mount View Lane and climb the hill to Meadow Lane
- Turn Left on Meadow Lane
- Cross Austin Bluffs to the campus.

4) Yet another option is to exit the Greenway Trail at Austin Bluffs adjacent to Pikeview Reservoir. Go to the sidewalk on the south side of Austin Bluffs and head east to Nevada Ave. At the crosswalk, cross to the east side of Nevada and then cross to the North side of Austin Bluffs and enjoy the climb up the Austin Bluffs Sidewalk Trail to the campus. There is a bike lane on Austin Bluffs but it is often covered with debris and you will be breathing the exhaust of all the vehicles straining up the hill. Select your routes wisely.

### 5) Approaching from the East:

Until the construction at Union and Austin Bluffs is completed, safe, consistently well marked and maintained bicycle trails may not be available. Ascending Austin Bluffs Parkway in the right lane on a bicycle is legal but may not be a wise route choice.

## Cycling Routes To UCCS

### 1) Approaching from the South:

There is only one street that crosses the Templeton Gap Floodway (which is a significant barrier) between Nevada and Union when approaching the campus from the south.

Hancock Ave/.

Once across the Floodway there are many streets that can be used to get to Meadow Lane which crosses Austin Bluffs Parkway, but the most direct is:

- Hancock to Cumberland St.
- Right on Cumberland to Acacia Drive
- Left on Acacia Dr. to Meadow Lane
- Right on Meadow Lane
- Cross Austin Bluffs to the campus

### 2) Approaching from the West:

The Greenway Trail parallels I-25 between Palmer Lake and Fountain. There are many options for free, well lit parking and access to streets along the trail. Cyclists can take the Greenway trail to Goose Gosage Park where you can access the Templeton Gap Trail

The Templeton Gap Trail crosses Nevada Ave and continues to Portal Park at Hancock Ave.

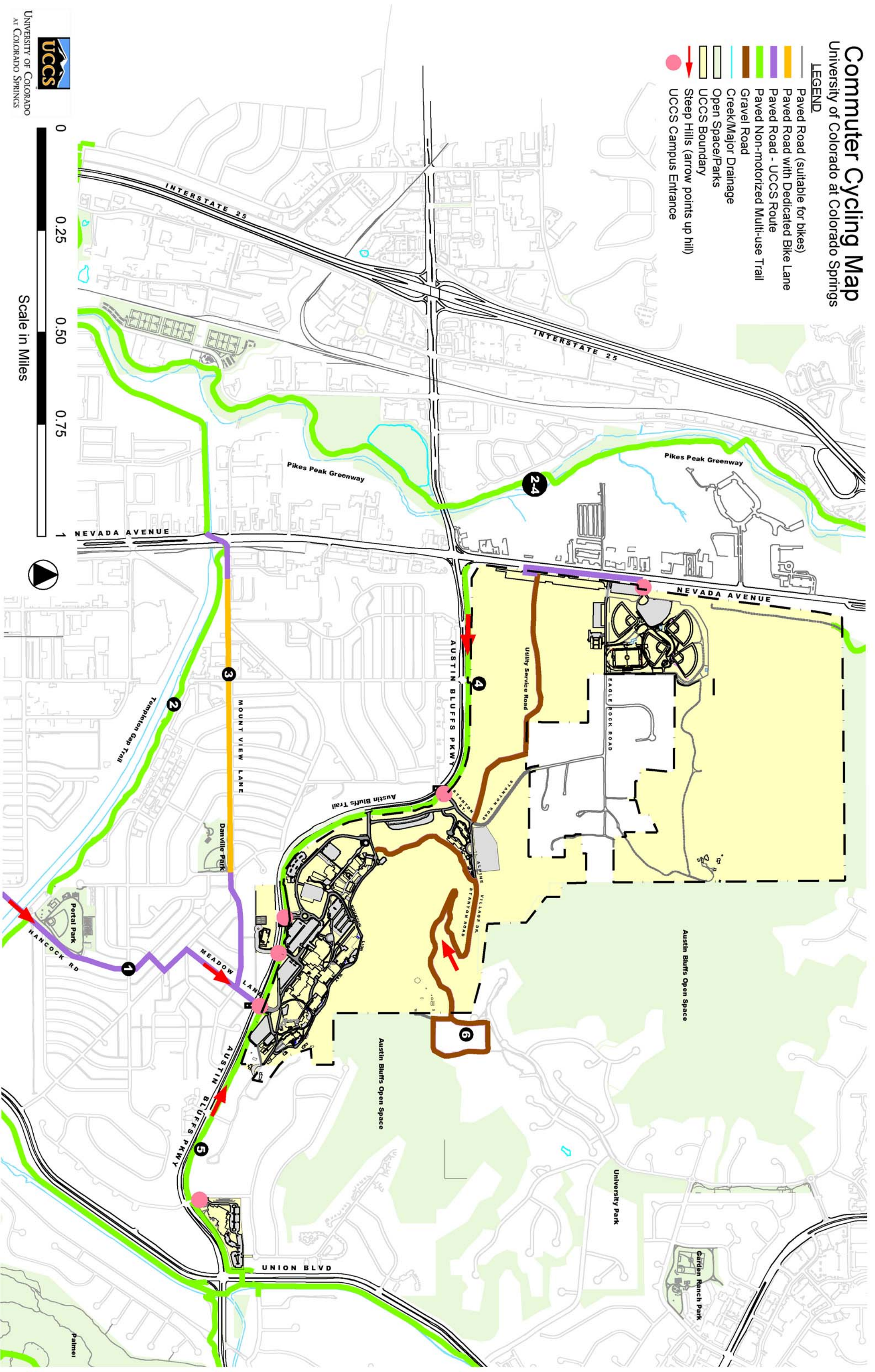
From Portal Park:

- Left on Hancock (which changes names to Manchester) to Cumberland St.
- Right on Cumberland to Acacia Drive
- Left on Acacia Dr. to Meadow Lane
- Right on Meadow Lane
- Cross Austin Bluffs to the campus.

# Commuter Cycling Map

University of Colorado at Colorado Springs

- LEGEND**
- Paved Road (suitable for bikes)
  - Paved Road with Dedicated Bike Lane
  - Paved Road - UCCS Route
  - Paved Non-motorized Multi-use Trail
  - Gravel Road
  - Creek/Major Drainage
  - Open Space/Parks
  - UCCS Boundary
  - Steep Hills (arrow points up hill)
  - UCCS Campus Entrance



Scale in Miles



UNIVERSITY OF COLORADO  
AT COLORADO SPRINGS