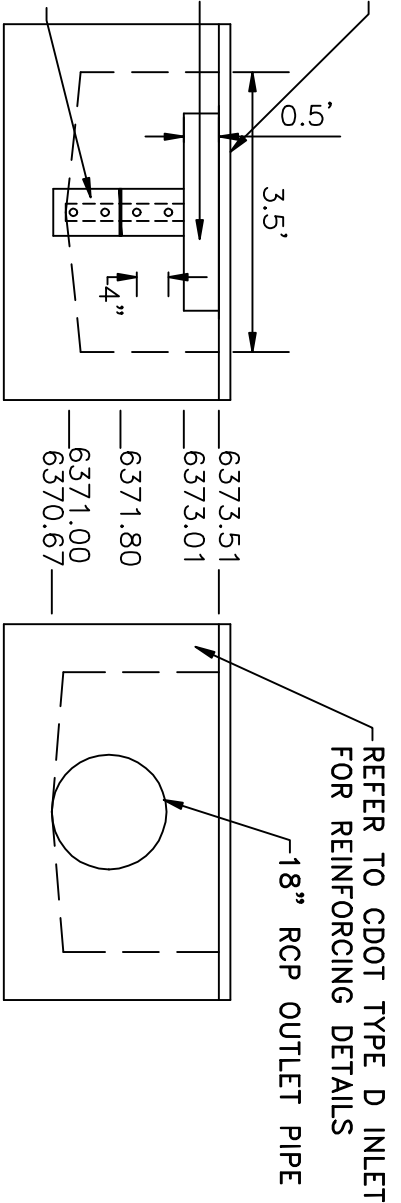


LOW PROFILE GRATE ATTACHED TO TOP OF OUTLET STRUCTURE

PROVIDE 36"x6" OPENING ON FRONT FACE, & 10"x6" OPENING ON EACH ADJOINING SIDE

INSTALL 1/4" STEEL ORIFICE PLATE WITH ONE COLUMN OF 9/16" Ø OPENINGS. WELD HORIZONTAL BEAD AT 6371.80 ACROSS FACE OF PLATE. SEDIMENT SHALL BE REMOVED WHEN LEVEL REACHES 6371.80



REFER TO CDOT TYPE D INLET FOR REINFORCING DETAILS

18" RCP OUTLET PIPE

6373.51
6373.01
6371.80
6370.67

OUTLET STRUCTURE

WATER QUALITY POND MAINTENANCE REQUIREMENTS

OWNER SHALL INSPECT INLET, OUTLET ANNUALLY. OWNER SHALL INSPECT THE FACILITY IN ASSOCIATION WITH ROUTINE MAINTENANCE FOR EXCESSIVE SEDIMENTATION, CLOGGING, EROSION, OVERGROWTH, EMBANKMENTS AND SPILLWAY INTEGRITY. OWNER SHALL: MOW GRASS OCCASIONALLY; REMOVE DEBRIS AND LITTER PERIODICALLY, JUST BEFORE ANNUAL STORM SEASONS (MAY AND APRIL) AND FOLLOWING SIGNIFICANT RAINFALL EVENTS; REPAIR AND RE-VEGETATE ERODED AREAS AS NECESSARY; REPAIR INLETS AND OUTLETS WHENEVER DAMAGE IS DISCOVERED; REMOVE ACCUMULATED SEDIMENT AT THE BOTTOM OF THE BASIN WHEN SEDIMENT OCCUPIES 20% OF THE WATER QUALITY CAPTURE VOLUME - AT ELEVATION 6371.80 AS INDICATED BY A LINE ON THE ORIFICE PLATE.

DATE: 05/20/08

ADDENDUM #1

C2.2

LOT 9 SITE PLAN

THE UNIVERSITY OF COLORADO
AT COLORADO SPRINGS

PLAN PREPARED BY:
Bradley B. Bean, PE

ENGINEERING & SOFTWARE

419 East Columbia Street
Colorado Springs, CO 80907
(719) 578-9391